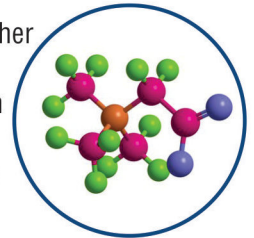


PROBETAINE

Betaine HCl, Pepsin & Co-Factors

What is Betaine and how ProBetaine Produced?

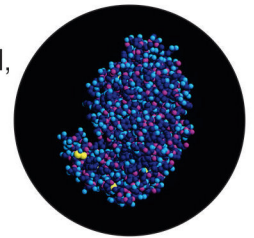
Betaine is an important ingredient in broiler nutrition. It improves production performance, replaces other methyl group donors such as choline and methionine, assists birds under heat stress conditions and improves slaughter characteristics. The major source so far has been betaine anhydrate extracted from sugar beet. However, a proper crystalline betaine hydrochloride has proven to also work well. This is available all year long and production capacity is independent to sugar beet production. Moreover, it is cost effective.



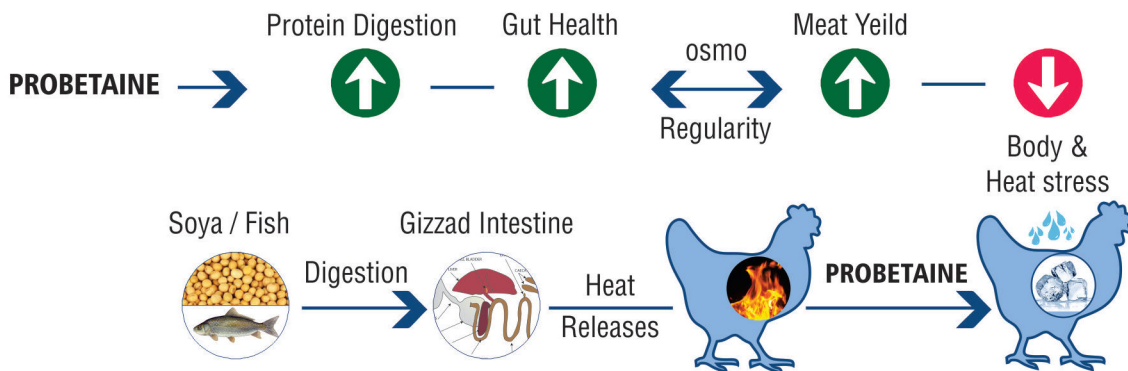
Since hygroscopicity may limit application in feed factories we produce. With a strong focus on the crystallisation process and correct application of a free flowing carrier, of betaine hydrochloride with Pepsin.

What is Pepsin ?

Pepsin is the powerful enzyme in gastric juice that breaks down dietary proteins such as those in MBM, Poultry by Product Meal, Fish, fishmeal and Vegetable Protein from seeds. The body produces pepsin in response to eating protein, but insufficient amounts may reduce the metabolism and proper absorption protein. Supplemental pepsin encourages a more complete breakdown of dietary protein and frees amino acids so they can participate in a number of cell functions within the body.



Benefit of Pro-Betaine:



Application:

- Use PROBETAINE as Osmolyte
- As Methyl Donor for cost saving by replacement of Methionine and Choline.
- For better Protein digestion due to its pepsin synergism.

Dosage:

500gm – 1kg per ton of feed.

Presentation:

25kg bag.

